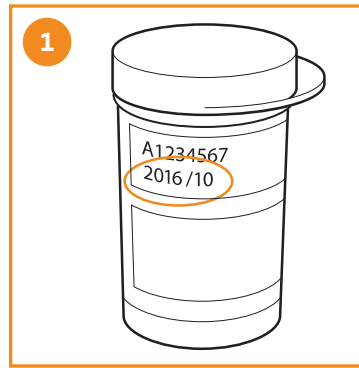
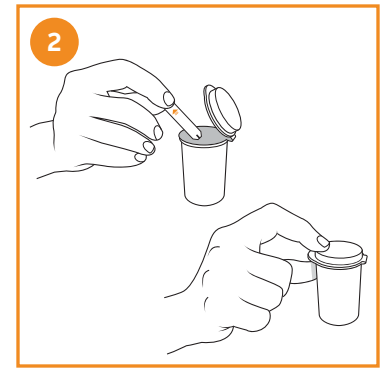


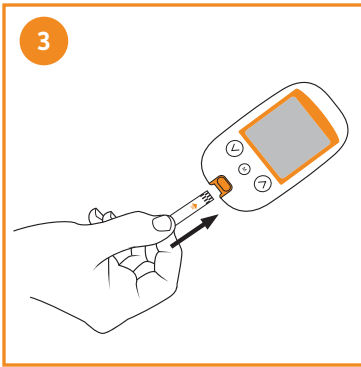
User Quick Guide



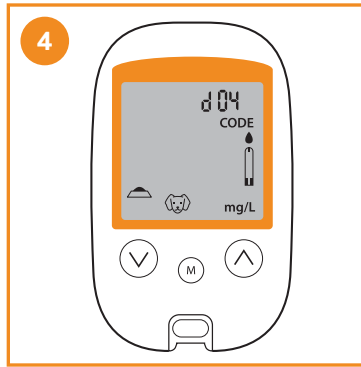
1 Check the test strip expiration date on the vial. Do not use test strips past the expiration date.




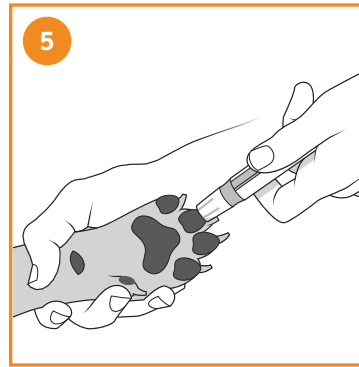
2 Remove a test strip from the vial, and tightly close the cap.



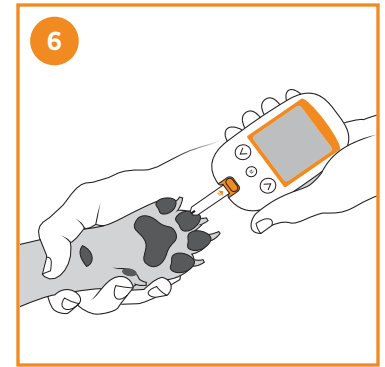
3 Insert the test strip into the meter in the direction of the arrows until the meter beeps.



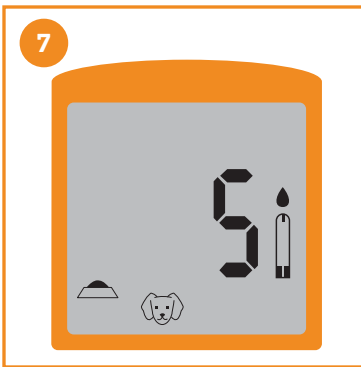
4 A code number will appear, followed by a flashing  icon. You can press the up or down arrow to select the meal indicator. No meal indicator is the default.



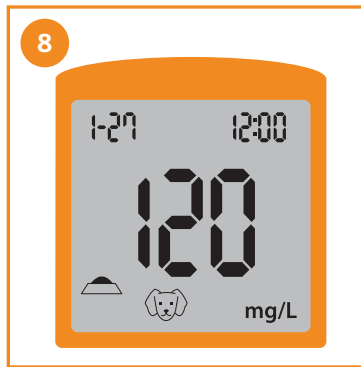
5 Hold the lancing device against the animal paw or marginal ear vein and press the release button to obtain a blood sample.



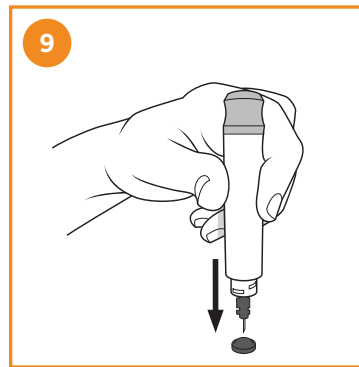
6 Touch the end of the test strip to the blood drop.



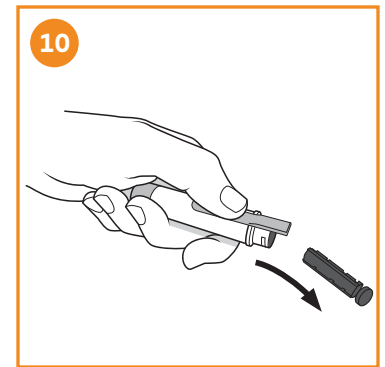
7 The meter beeps and will countdown as soon as there is enough blood in the test strip.



8 The test result appears on the display after 5 seconds.



9 Remove the cap from the lancing device. Push the exposed lancet needle into the lancet protective cap (previously removed to expose the needle).



10 Eject the lancet from the lancing device by pushing the lancet ejector forward.